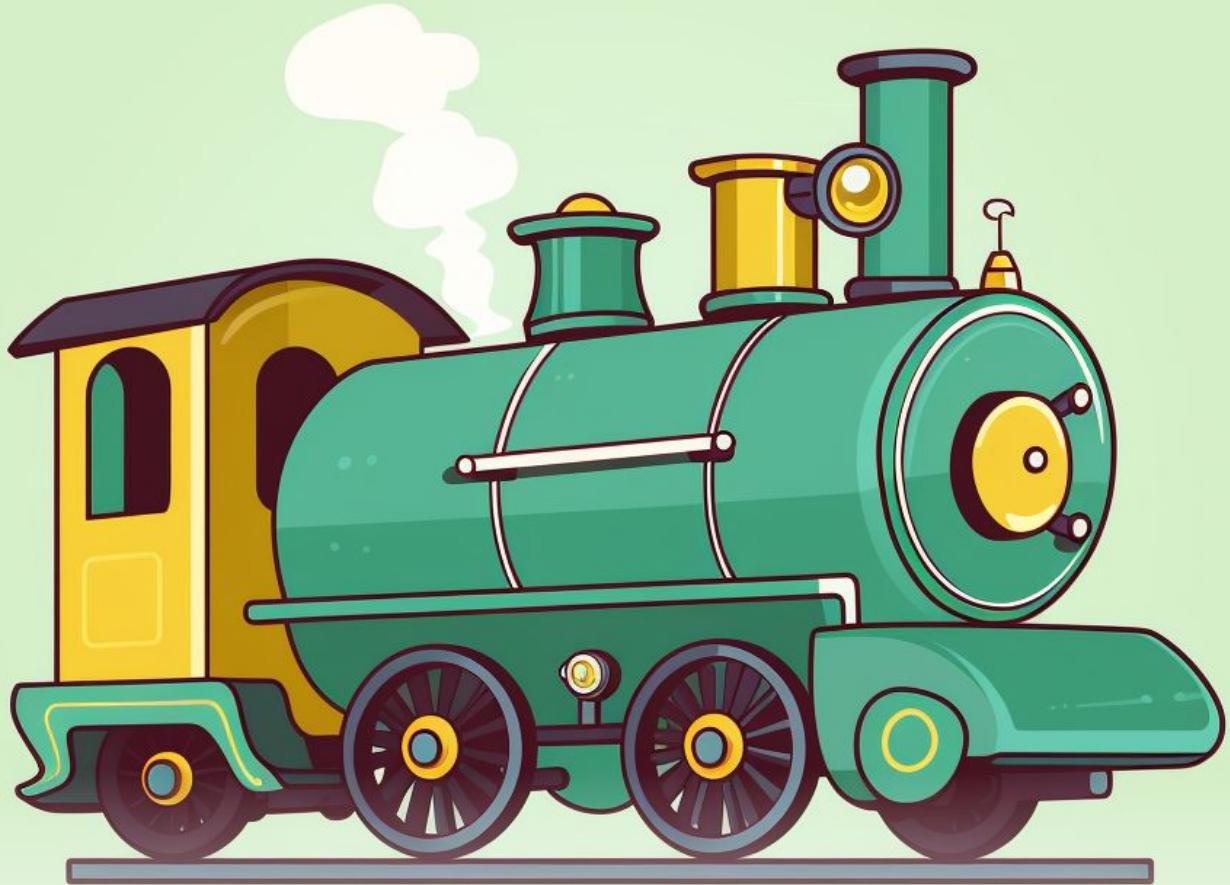


# The ABC's of Trains



**Brain Day**

Illustrated By: **Melony Jacobson**



**FreeKidsBooks.net**

*FKB-ID: 00026*

# The ABC's of Trains

---

*This book is dedicated to:*

All of the kids that love learning  
and share my love of speed.

- Brain Day

# Copyright

---

Copyright © 2023 by PAYABLE USA Inc.

All rights reserved.

No portion of this book may be reproduced in any form without written permission from the publisher or author.

To request permission, contact the publisher at:  
**[publisher@freekidsbooks.net](mailto:publisher@freekidsbooks.net)**

Paperback ISBN: **{{ISBN}}**

First paperback edition: **October 2023**

PAYABLE USA Inc.  
19266 Coastal Hwy, Unit 4-1164  
Rehoboth Beach, DE 19971 US

[FreeKidsBooks.net](http://FreeKidsBooks.net)

*FKB-ID: 00026*

# The ABC's of Trains

---

Written By

**Brain Day**

Illustrated By

**Melony Jacobson**

Narrated By

**Beverly Jacobson**



Aa

– is for –

**Amtrak**

Amtrak is a company that operates  
passenger trains in the United  
States.





# Bb

– is for –

## Boxcar

Boxcars are train cars with closed, rectangular containers used for transporting various goods.



Cc

– is for –

**Coal Tender**

The coal tender is a car that carries coal to fuel steam locomotives.



# Dd

– is for –

## **Double Track**

Double track means there are two parallel railroad tracks running side by side, allowing trains to go in different directions.





# Ee

– is for –

## **Express Train**

An express train is a fast train that makes fewer stops, getting passengers to their destinations quickly.





Ff

– is for –

**Funicular**

A funicular is a special railway that goes up steep hills using a cable system.



# Gg

– is for –

## **Grade Crossing**

A grade crossing is where a road crosses the railway, and it often has gates and lights to warn drivers when a train is coming.



Hh

– is for –

## High-Speed Rail

High-speed rail systems use fast trains that travel at high speeds, like the bullet trains in Japan.





# Ii

– is for –

## **Intermodal**

Intermodal transportation involves using multiple modes of transportation, such as trains and trucks, to move cargo.





# Jj

– is for –

## Junction

A junction is where two or more railroad tracks meet, allowing trains to switch from one track to another.



# Kk

– is for –

## Kettle Car

Kettle cars are used to transport hot liquid materials like molten sulfur or tar.





– is for –

# Light Rail

Light rail systems are like smaller trains that run in cities, often on tracks built into the streets.

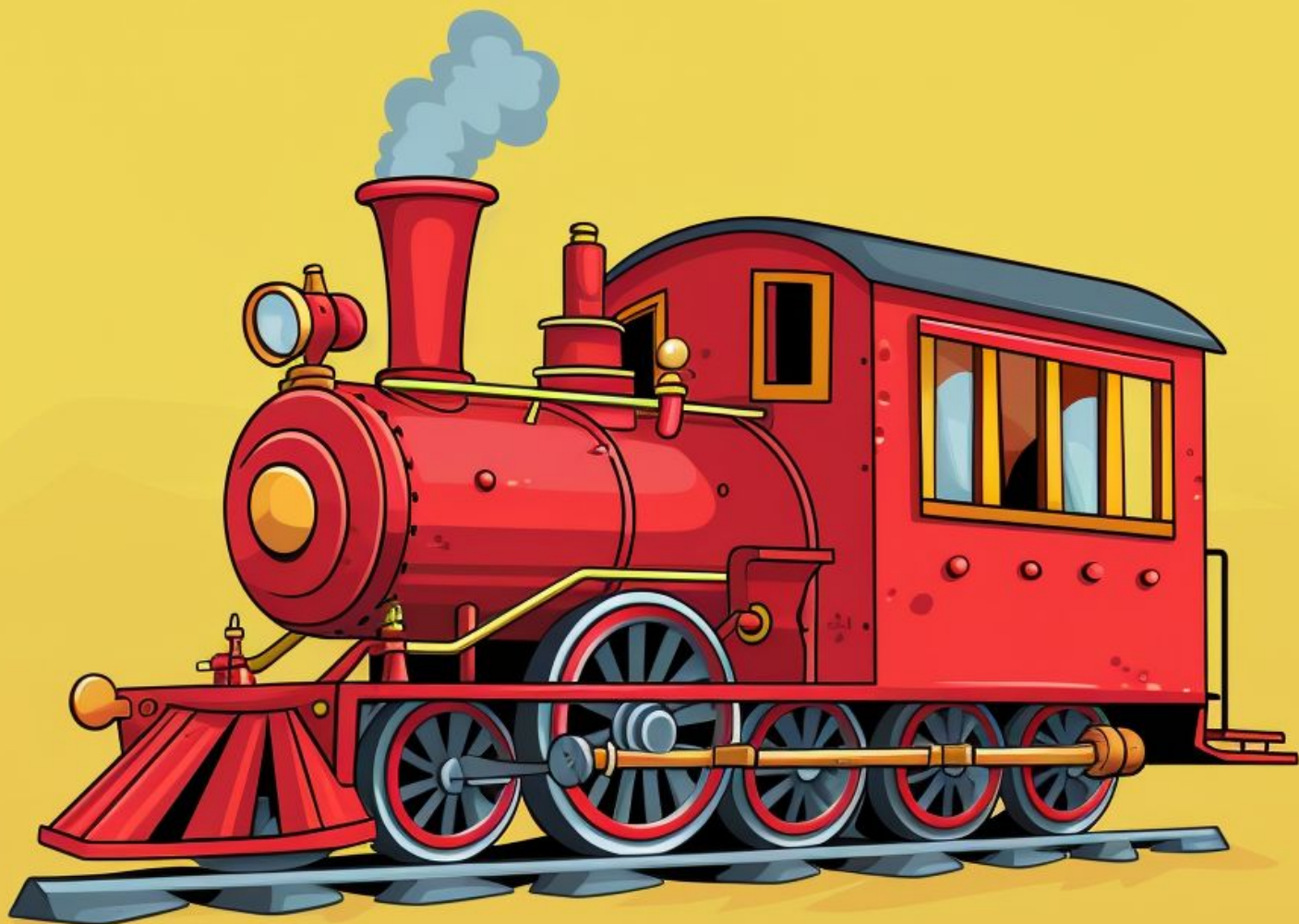


# Mm

– is for –

## **Monorail**

A monorail is a single rail-based transportation system with cars that hang beneath the track.



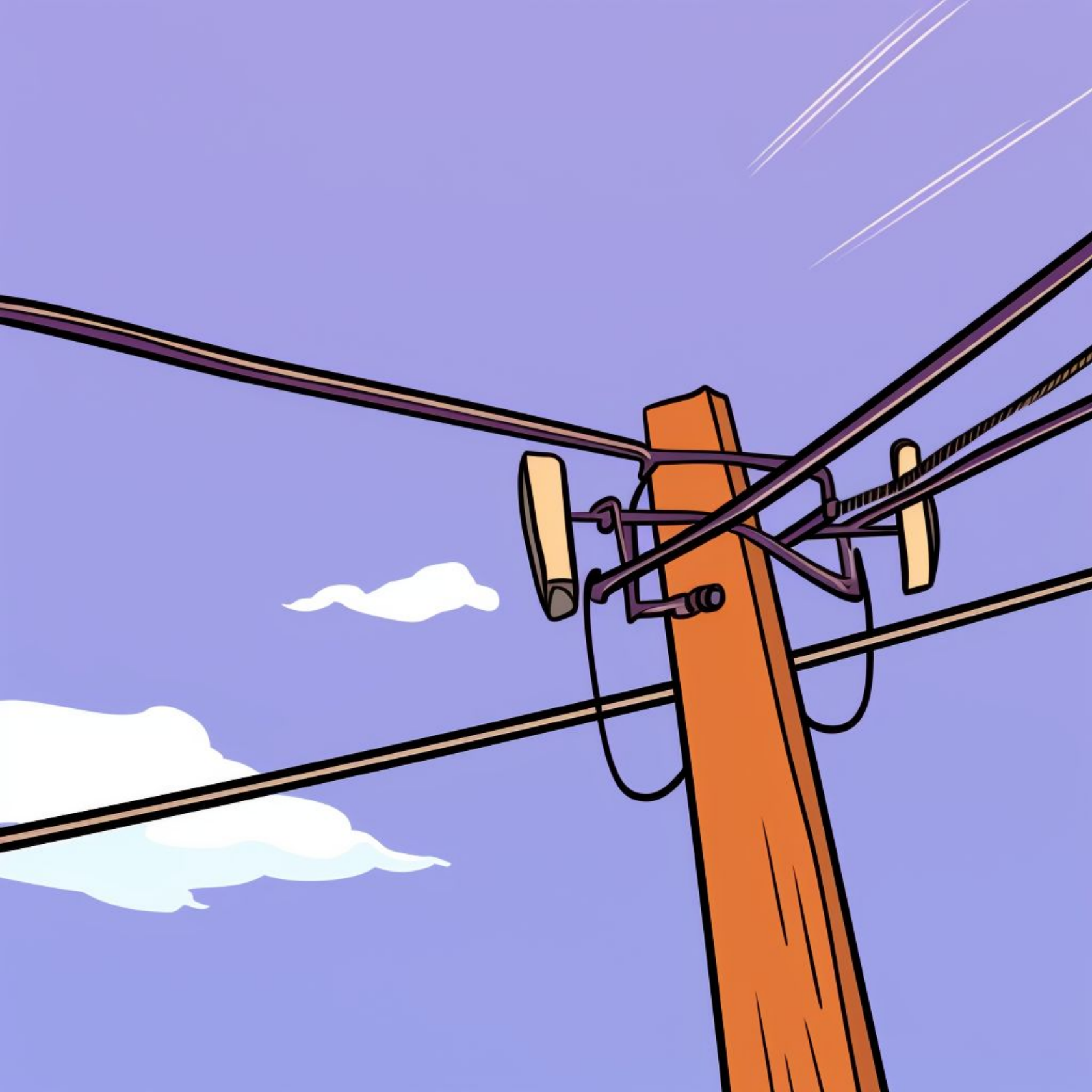


# Nn

– is for –

## **Narrow Gauge**

Narrow gauge railways have tracks that are closer together than standard gauge tracks, often used in mining or hilly areas.



Oo

– is for –

## Overhead Wire

Overhead wires provide power to electric trains, like trams and some commuter trains.

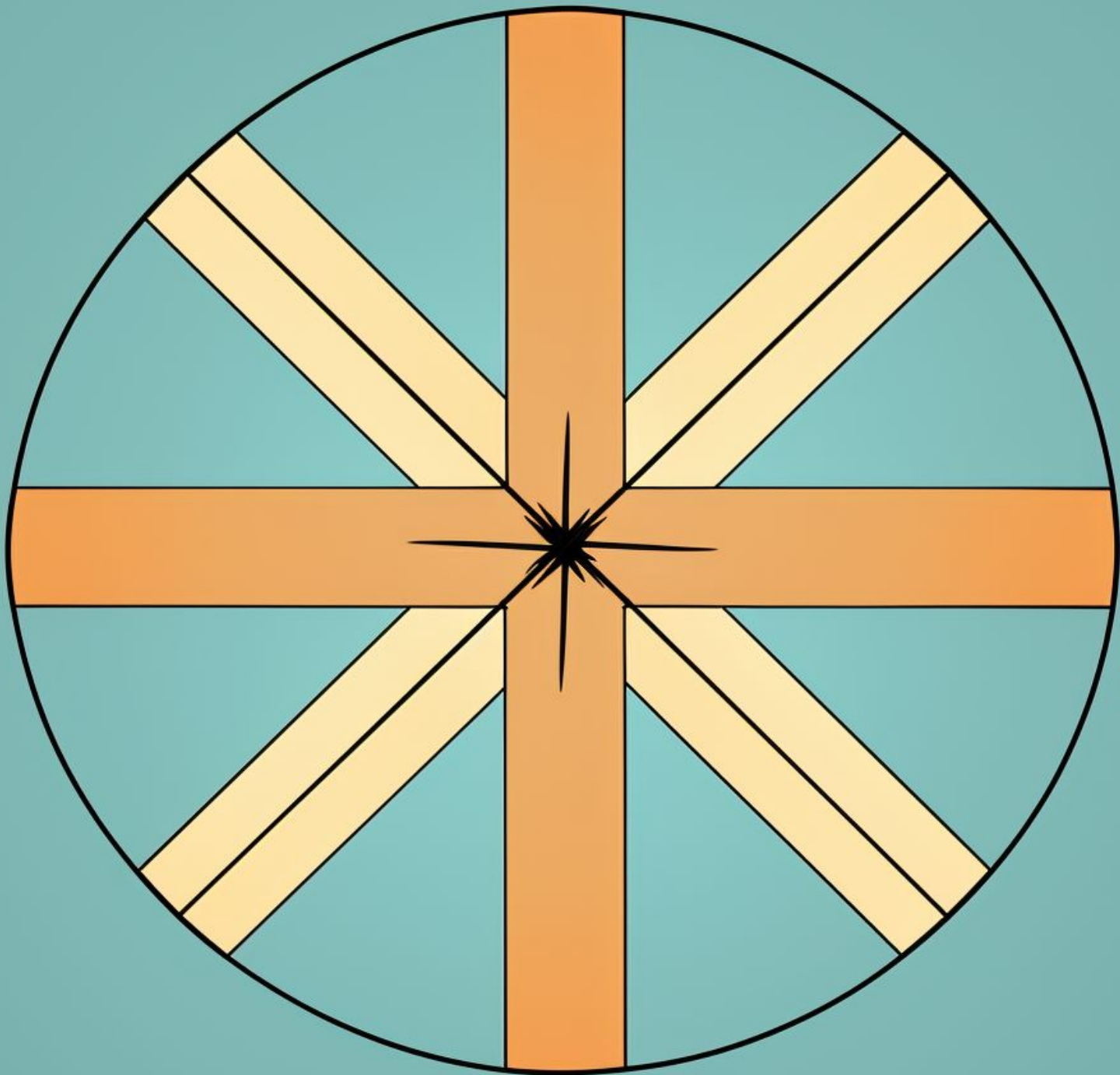


Pp

– is for –

## Pullman Car

Pullman cars are luxurious passenger cars with comfortable sleeping accommodations.



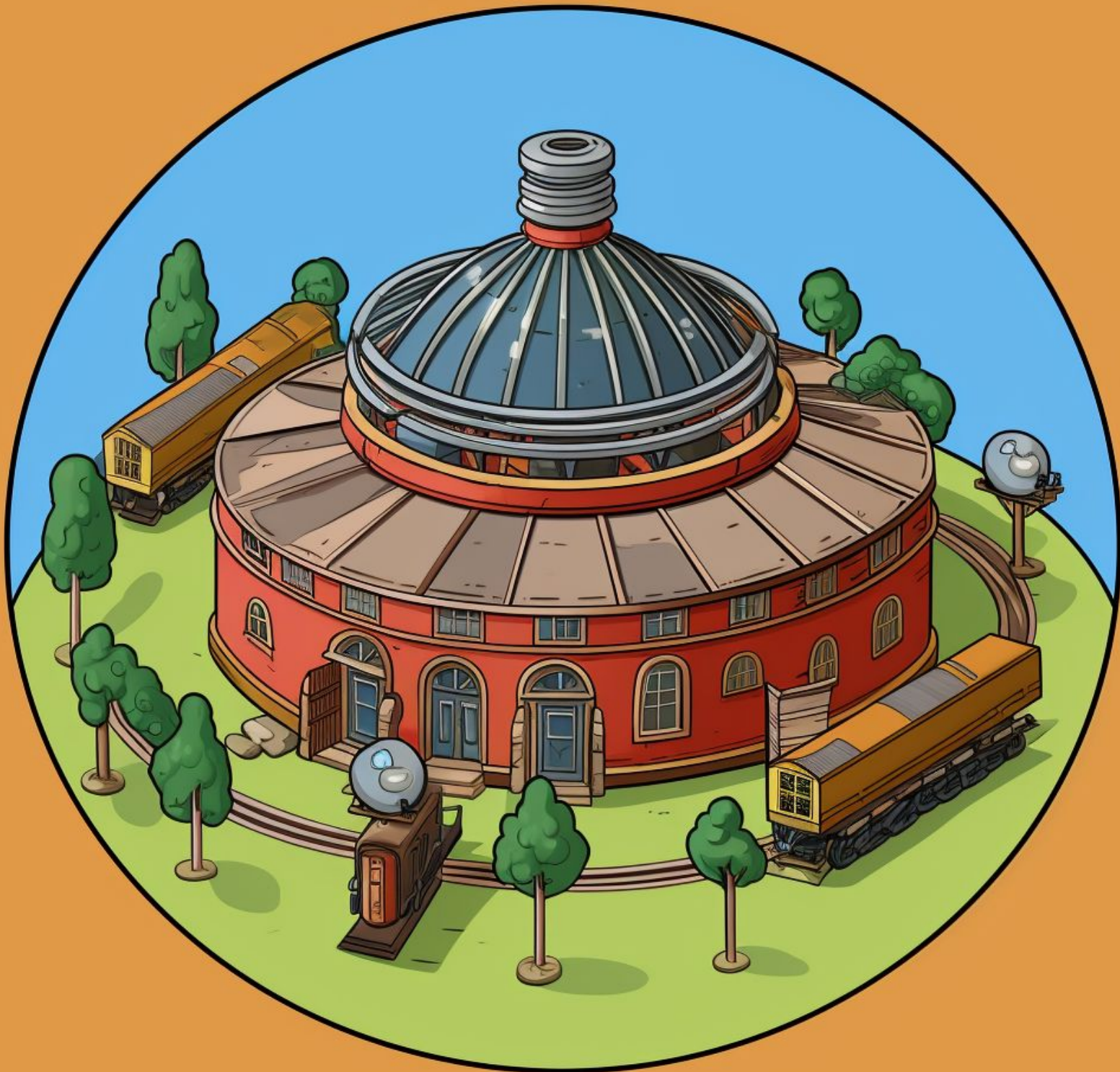
Qq

– is for –

## Quadrant Crossing

A quadrant crossing is a type of railway crossing where two tracks intersect at a right angle.





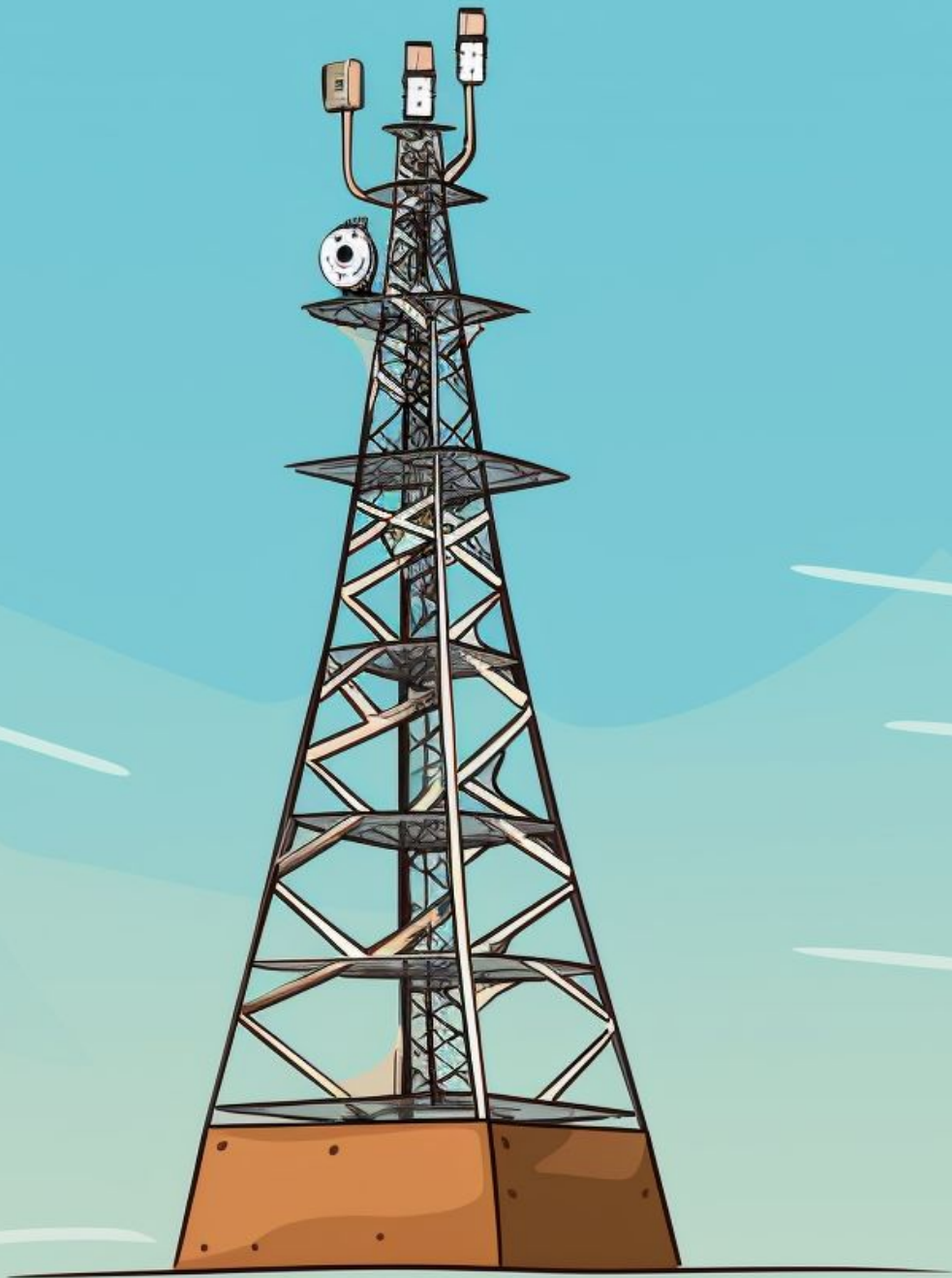


# Rr

– is for –

## Roundhouse

A roundhouse is a building with a turntable used to store and service locomotives.



Ss

– is for –

## Signal Tower

Signal towers are structures where operators control the signals and switches for the railway.



Tt

– is for –

**Trestle**

A trestle is a bridge-like structure that supports the railway over uneven terrain.





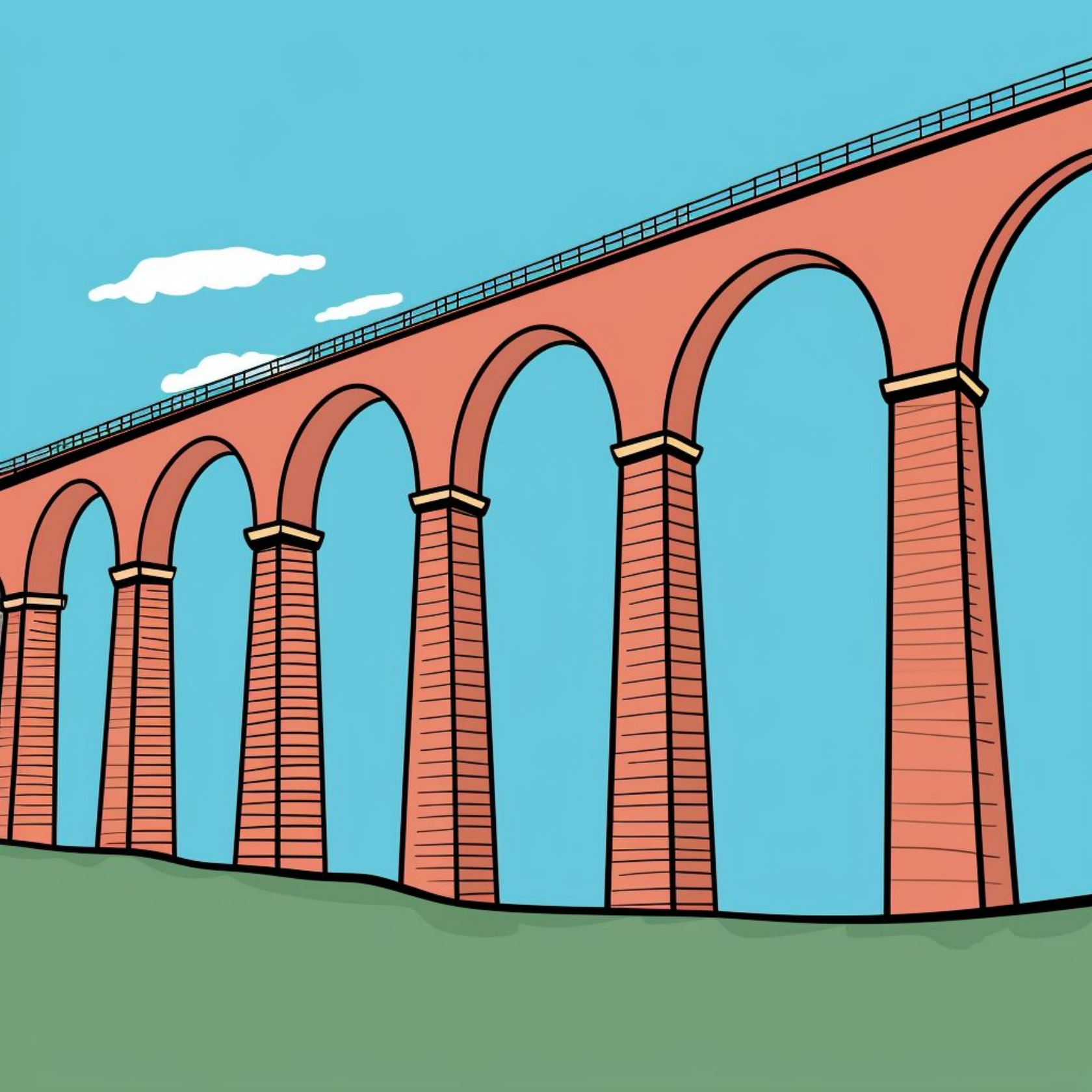


Uu

– is for –

**Underpass**

An underpass is a tunnel or bridge that allows roads or pedestrians to pass beneath the railway tracks.



Vv

– is for –

**Viaduct**

A viaduct is a long bridge that carries the railway over valleys, rivers, or other obstacles.



Ww

– is for –

**Water Tower**

Water towers are used to refill steam locomotives with water while on the journey.





The image shows the letters 'X' and 'x' in a stylized, rounded font. The letters are white with a thick black outline, set against a solid green background. The 'X' is larger than the 'x'.

– is for –

## Xing Sign

Xing signs are warning signs at railroad crossings, reminding drivers to be cautious.



Yy

– is for –

**Yardmaster**

The yardmaster is in charge of coordinating train operations in a rail yard.



# Zz

– is for –

## Zigzag Track

Zigzag tracks wind back and forth on steep slopes to help trains climb or descend safely.

# The End

---

I hope you enjoyed this book.

Check the other ABC books we have and keep practicing!

*Thanks for reading.*

*- Brain Day*

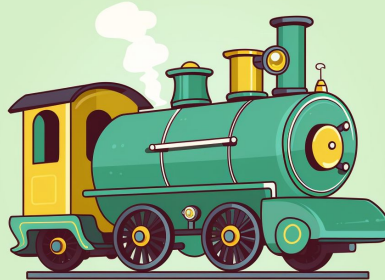




**FreeKidsBooks.net**

*FKB-ID: 00026*

# The ABC's of Trains



Teach your little one the ABC's with a collection of fun terms. Filled with bright illustrations. There is never been a more fun way for both kids and adults to learn the ABCs.

ISBN: {{ISBN}}

